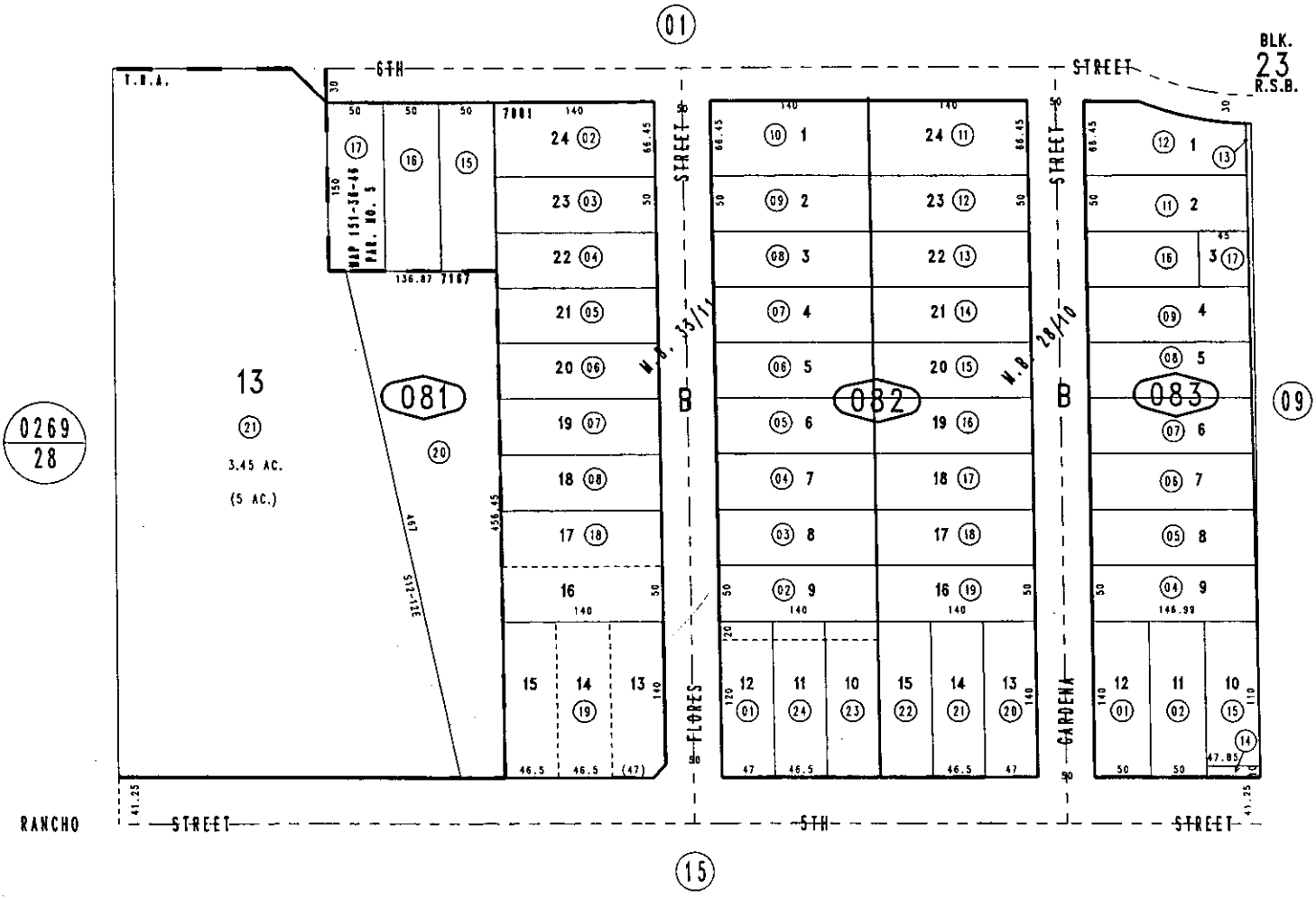


THIS MAP IS FOR THE PURPOSE  
OF AD VALOREM TAXATION ONLY.

Ptn. Rancho San Bernardino  
M.B. 7/2

City of San Bernardino 0138 - 08  
Tax Rate Area  
7001,7167



August 2004

Ptn. Lo Gardena Sub. No. 2, Tract 2291, M.B. 33/11  
Ptn. Lo Gardena Sub., Tract 1942, M.B. 28/10

Assessor's Map  
Book 0138 Page 08  
San Bernardino County

REVISED