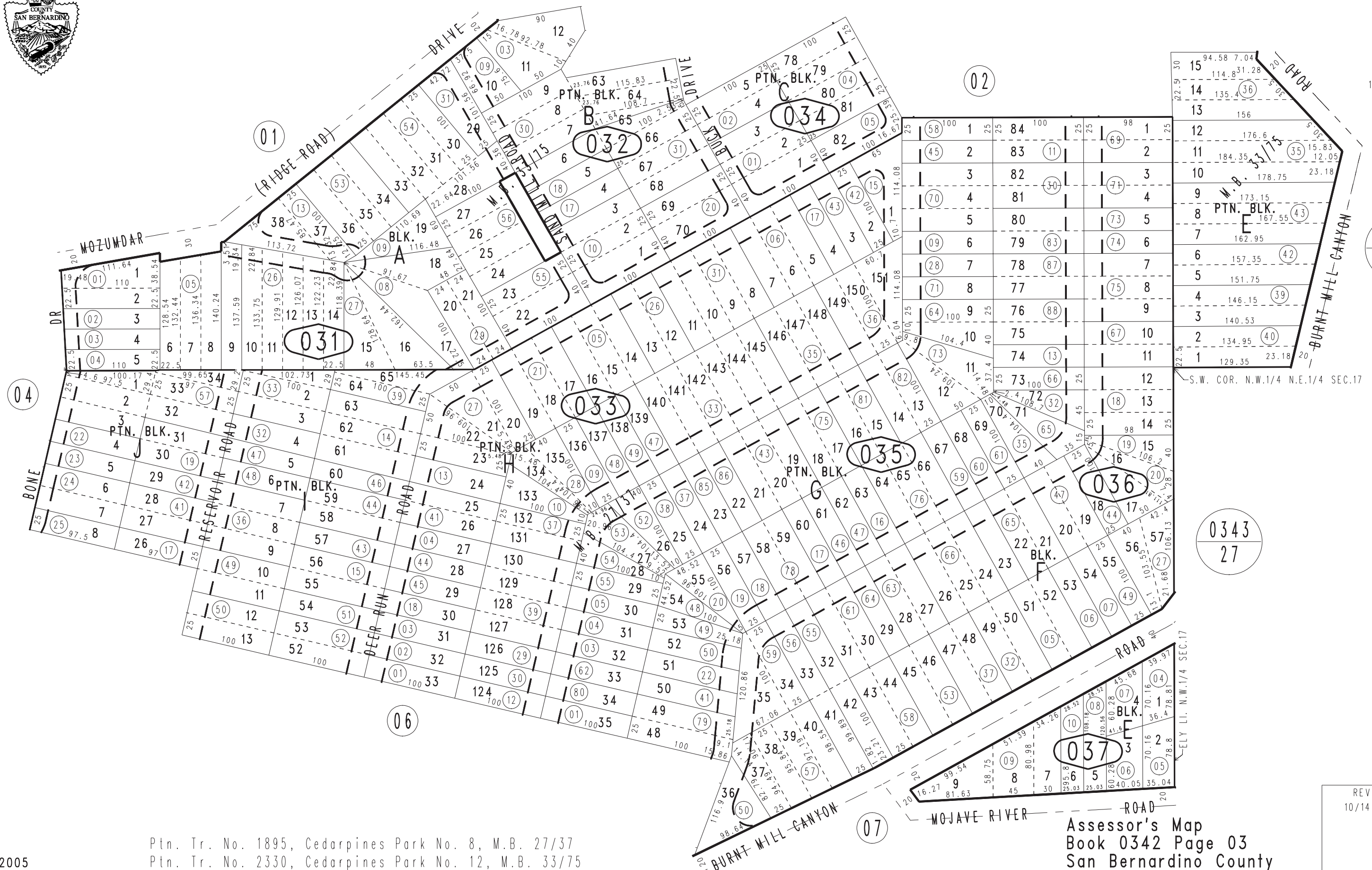


THIS MAP IS FOR THE PURPOSE OF AD VALOREM TAXATION ONLY.

Ptn. N.1/2 Sec.17, T.2N.,R.4W., S.B.B.&M.

Rim of The World Unified Tax Rate Area 105025 0342-03



0343  
01

0343  
27

May 2005

Ptn. Tr. No. 1895, Cedarpines Park No. 8, M.B. 27/37  
Ptn. Tr. No. 2330, Cedarpines Park No. 12, M.B. 33/75

Assessor's Map  
Book 0342 Page 03  
San Bernardino County

REVISED  
10/14/05 RM