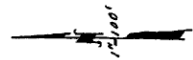
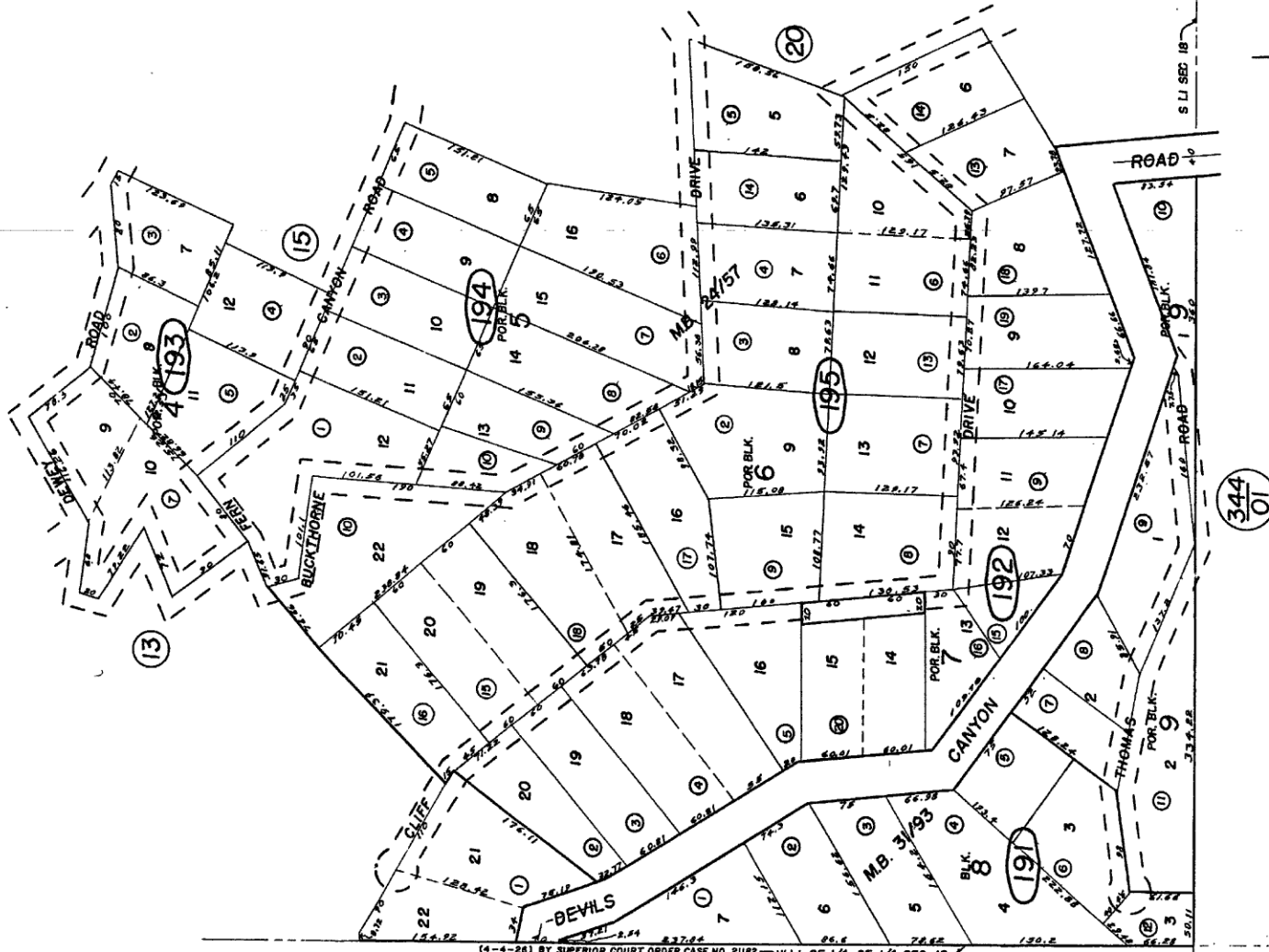




Por. SE1/4 SE1/4 Sec. 18, T.2N.R.4W, S.B.B.&M.

Rim of the World Unified  
Tax Rate Area  
105025

342-19



Por. Cedarpines Park No. 6, M.B. 24/57  
Por. Tr. 2164, M.B. 31/93

341  
25

Note-Assessor's Blk. & Lot  
Numbers Shown in Circles

Assessor's Map  
Book 342 Page 19  
San Bernardino County

REVISED	
11/21/67	
6/20/72	R.F.
8/23/78	R.G.
4/2/92	R.M.
6/18/92	R.R.
7/7/00	AGS