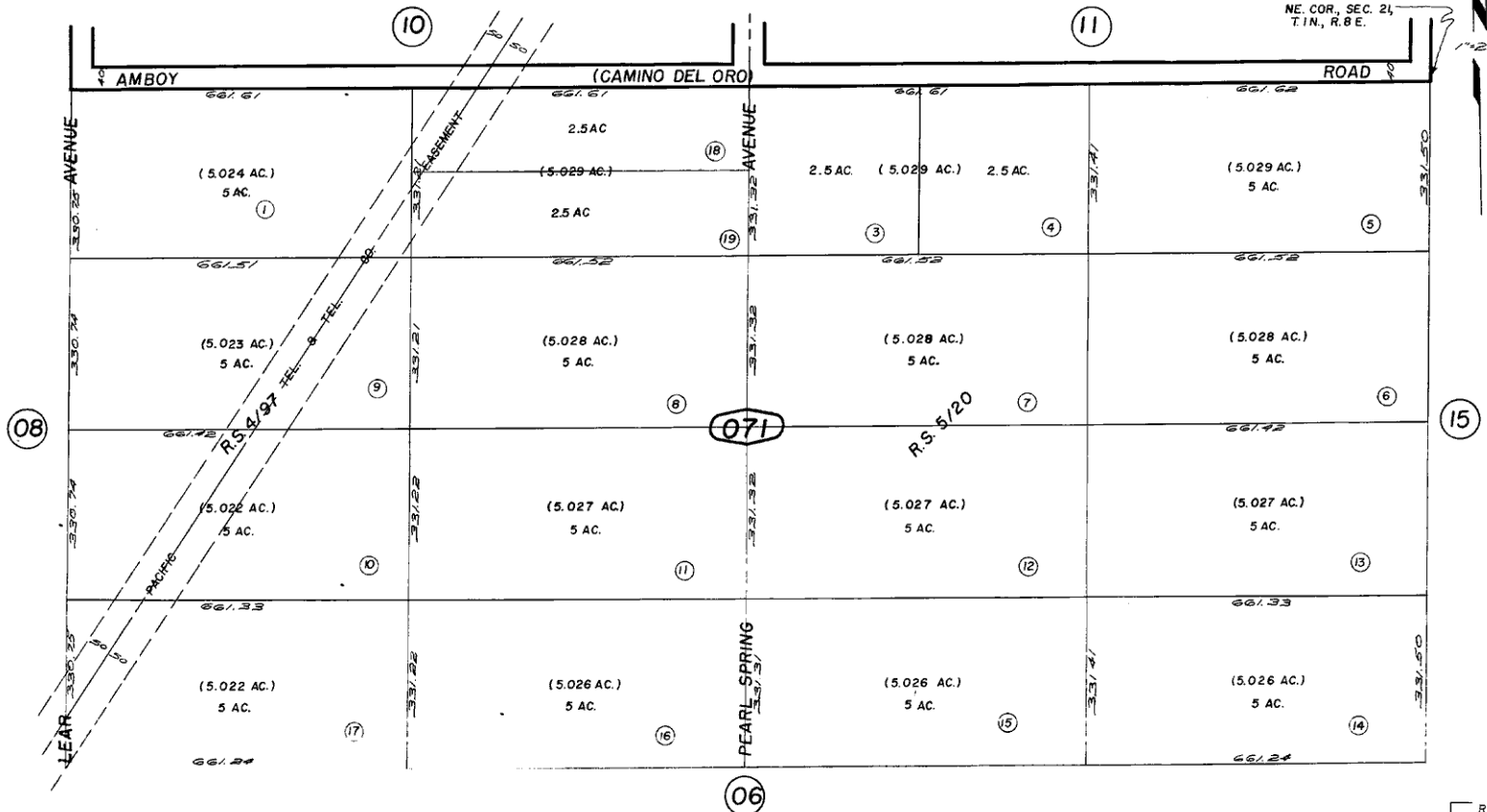




N.1/2, NE.1/4, Sec. 21, T.1N., R.8E., S.B.B. & M.
R.S. 4/97 & 5/20

City of Twentynine Palms 612-07
Tax Rate Area
19001



April 1960

Note - Assessor's Blk. & Lot
Numbers Shown in Circles

Assessor's Map
Book 612 Page 07
San Bernardino County

REVISED
1-23-68
6/14/94 RR