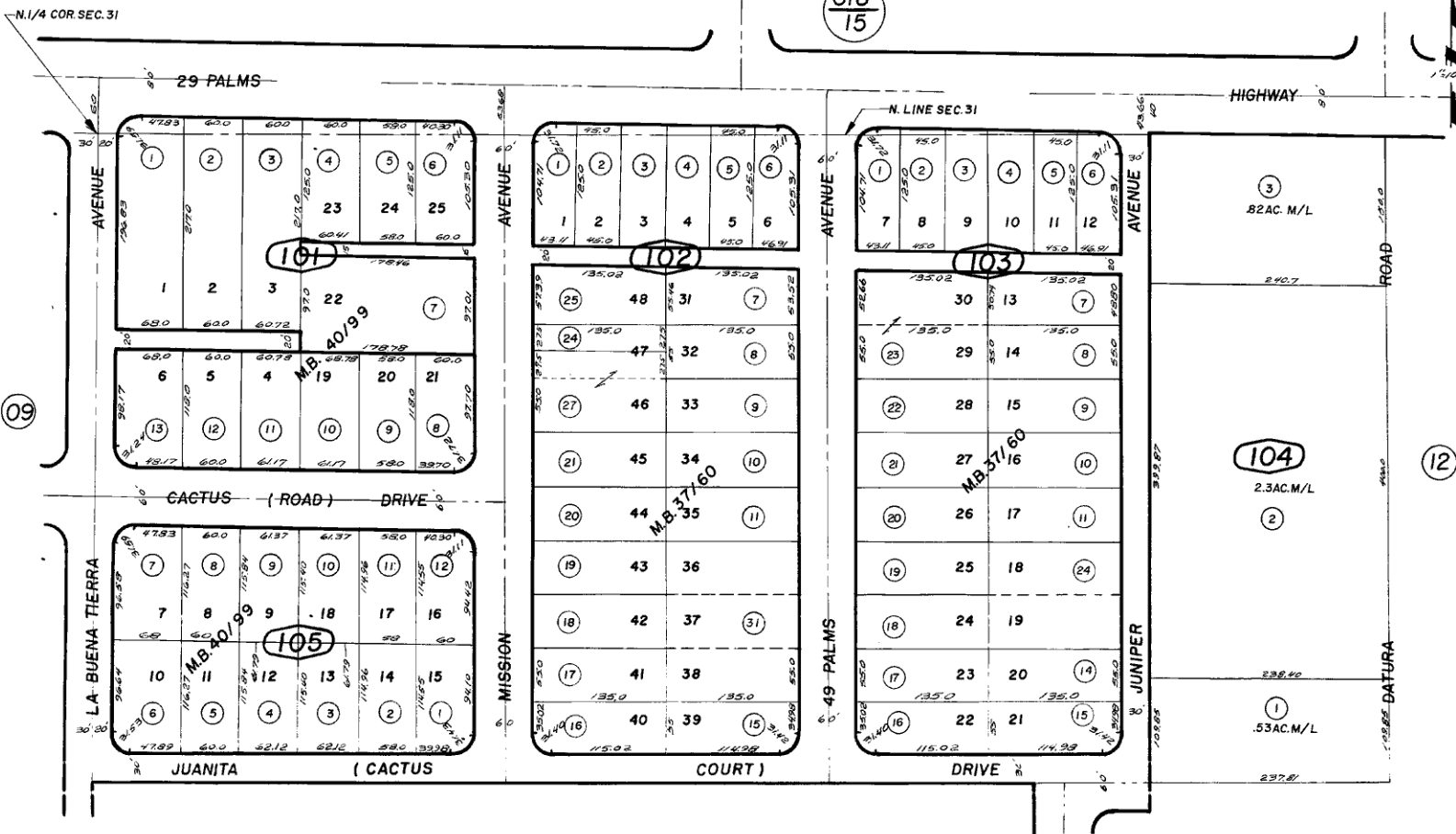




Por. N.W. 1/4, N.E. 1/4, Fractional Sec. 31, T. 1N., R. 9E., S.B.B. & M.  
 Tract No. 2941, M.B. 40/99  
 Tract No. 2630, M.B. 37/60

City of Twentynine Palms 616-10  
 Tax Code Area  
 19015

618  
15



11

Note-Assessor's Blk. & Lot  
 Numbers Shown in Circles

Assessors Map  
 Book 616, Page 10  
 San Bernardino County

REVISED  
 6/17/92 RR  
 6/15/94 RR  
 1/23/95 RR  
 10/23/91 RR  
 6/9/92 RR