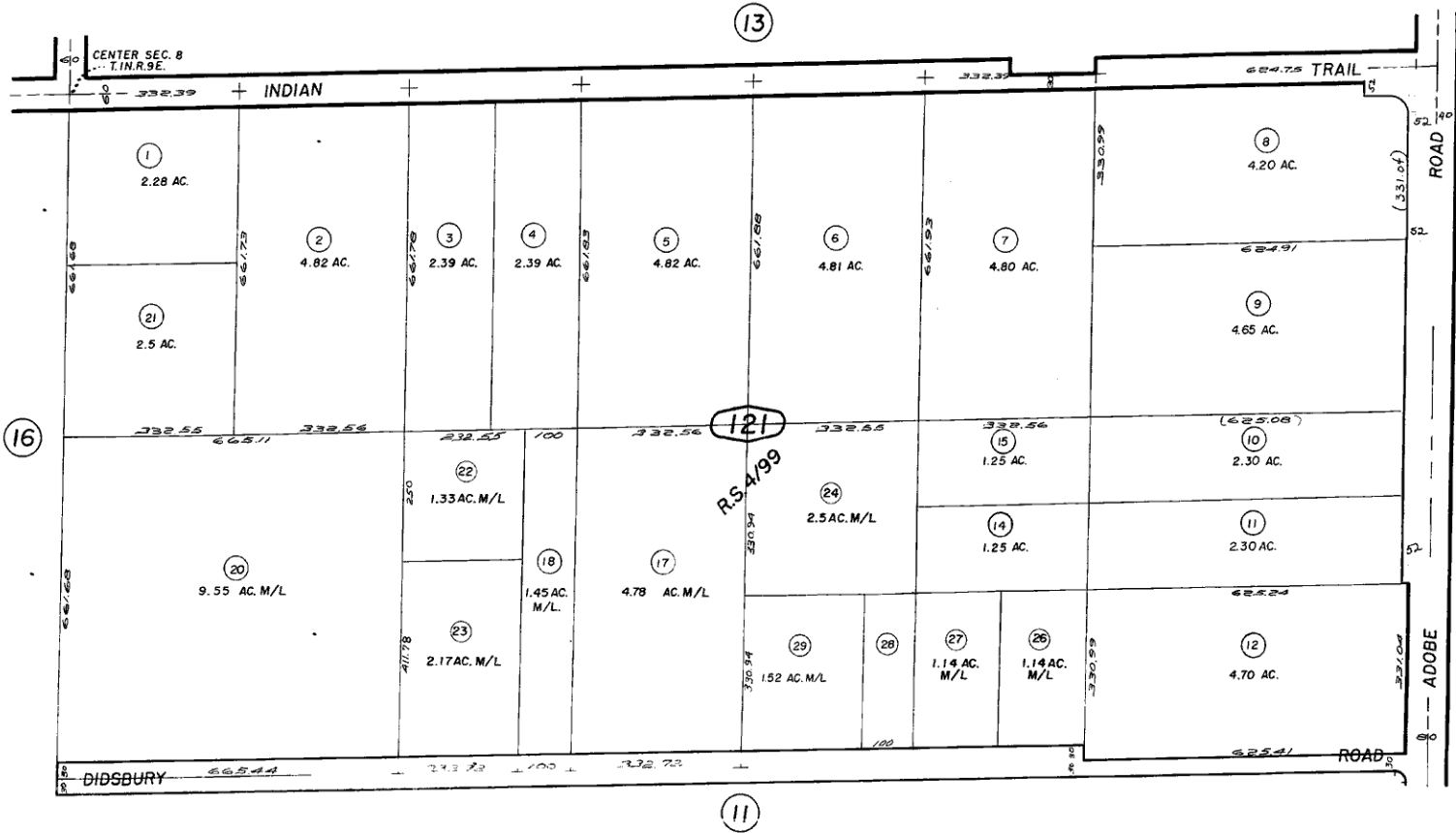




N.1/2, S.E. 1/4 Sec. 8, T.1N.R.9E., S.B.B.&M.  
R.S. 2/34

City of Twentynine Palms 620-12  
Tax Rate Area  
19001



*do*  
July 1959

Por. SE 1/4 Sec. 8, T.1N., R.9E. R.S. 4/99

Note-Assessors Blk. & Lot  
Numbers Shown in Circles

Assessors Map  
Book 620, Page 12  
San Bernardino County

REVISED
9/19/89 RM
10/23/89 RM
6/21/94 RR
6/12/89 RM
7/24/88 RM