



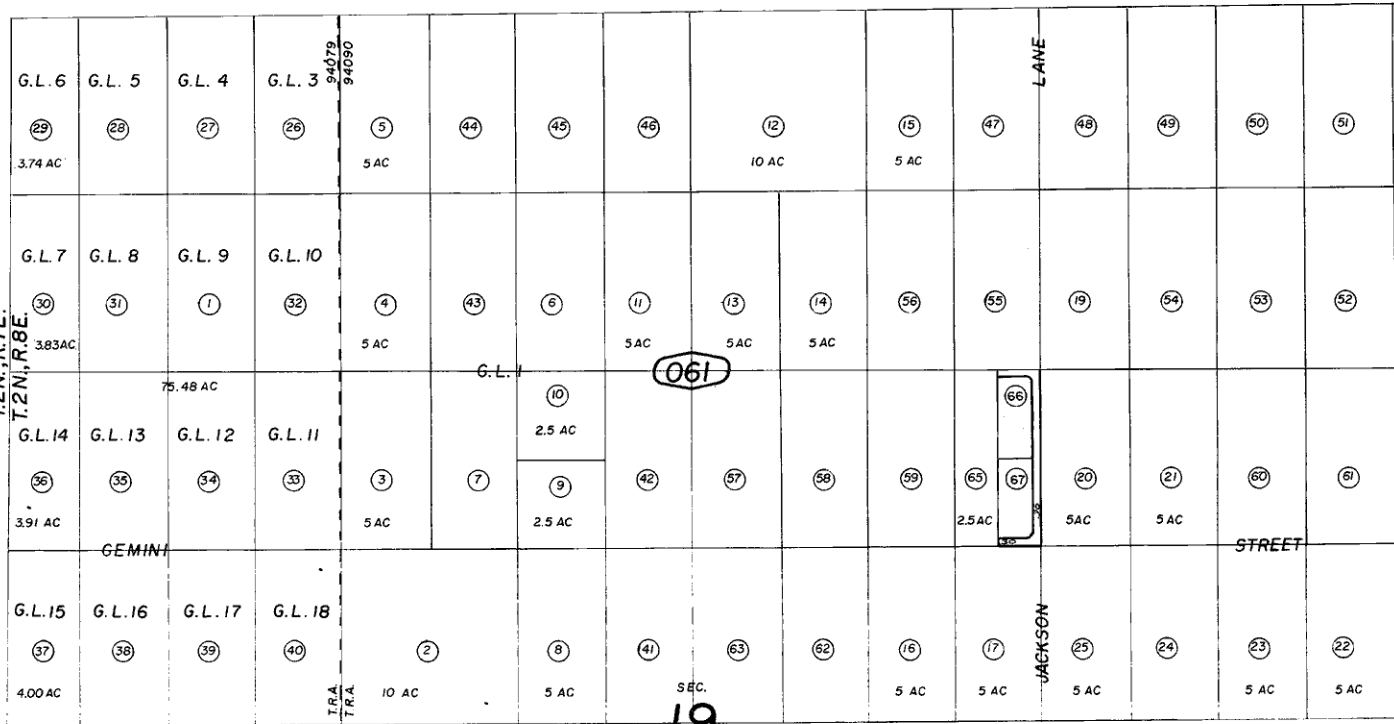
N.1/2 Fractional Sec. 19 T.2N., R.8E., S.B.B.&M.

Morongo Unified Tax Rate Area 94079,94090

633-06

632
17

T.2N., R.7E.
T.2N., R.8E.



07

39

061

19
(632.22 AC)

05



OCT 1970

Assessor's Map
Book 633, Page 06
San Bernardino County

REVISED
6/18/71 C.A.
8/10/90 GP
11/2/92 RM